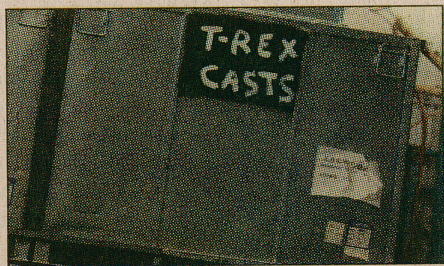


*Photos by Scott Gardner, The Hamilton Spectator*



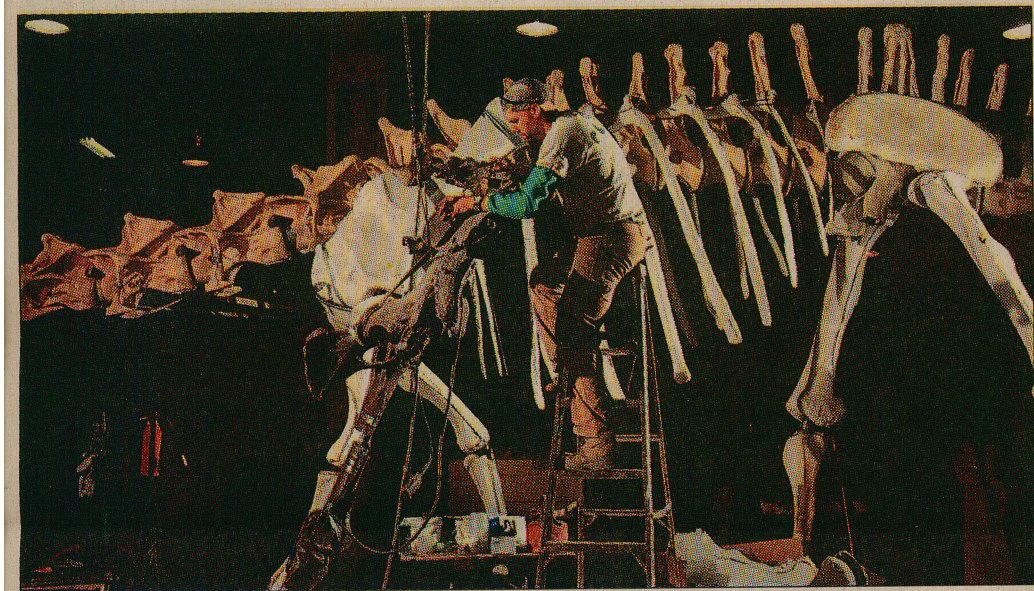
Alex Nelson, a crew member with Research Casting International, applies a coat of acrylic paint to the skeleton of an allosaurus. It's a brownish paint that gives a real fossil look to the resin-cast

# DINO-might



T-Rex casts are part of the scenery in a warehouse on Beamsville's Union Road.

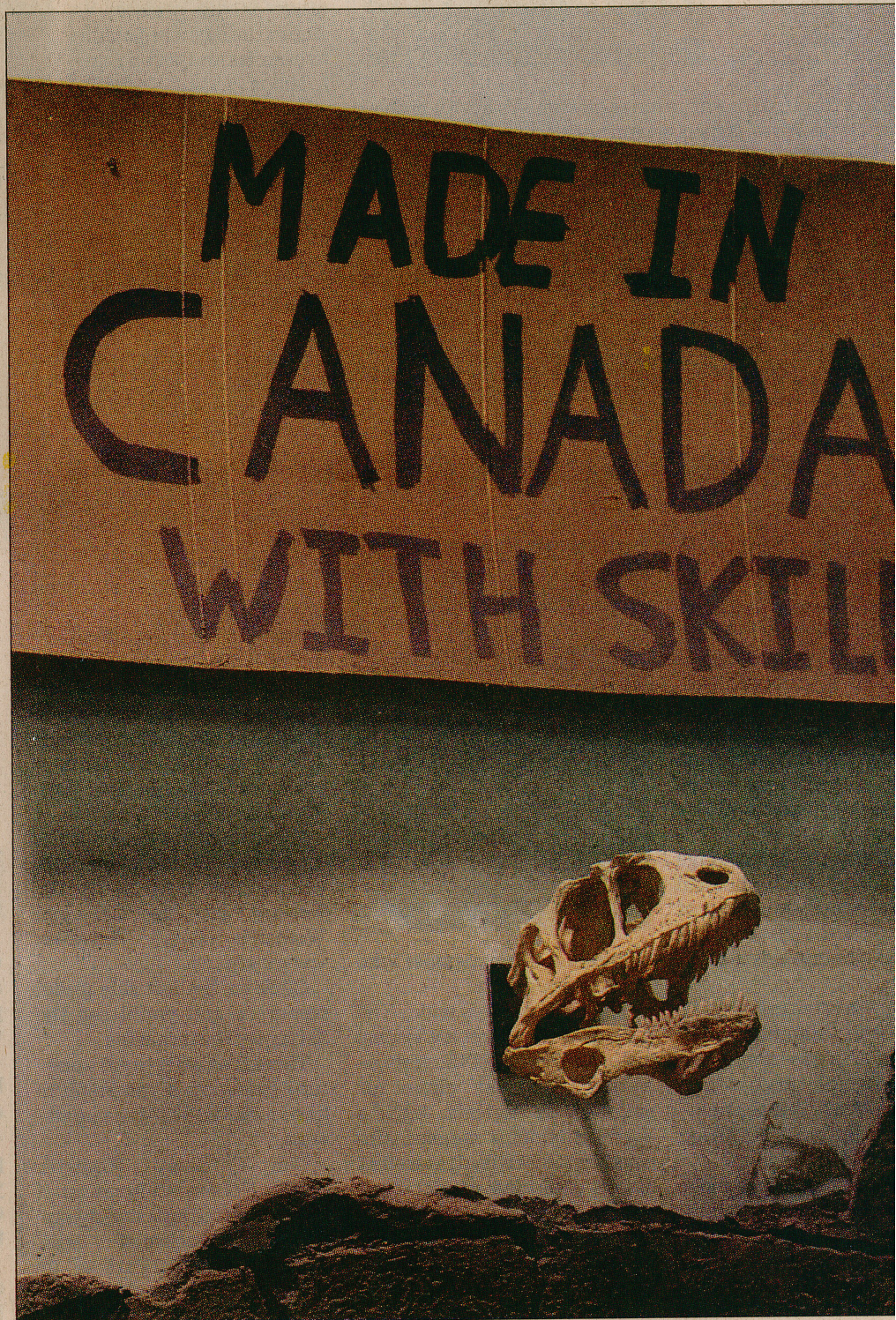
For 25 years, Peter May's company has helped build more than 400 dinosaur skeletons. Research Casting International in Beamsville is now one of the world's top dinosaur builders. Full story on page A1.



Kevin Krudwig, another of the company's crew members, works on the metal armature for the hip area of a mastadon. Behind him, the skeleton of a diplodocus is assembled.



The firm specializes in re-creating resin casts of fossils and skeletons. Here are some of the tools of the trade used by the firm's 17 employees, who include fine arts graduates and a blacksmith.



Here's one way that skeletons and fossils re-created by Research Casting International have been flashiest work was a T-rex and alamosaurus for the Steven Spielberg movie, Jurassic Park.